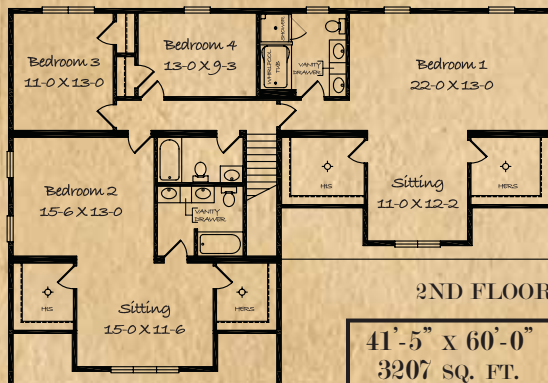
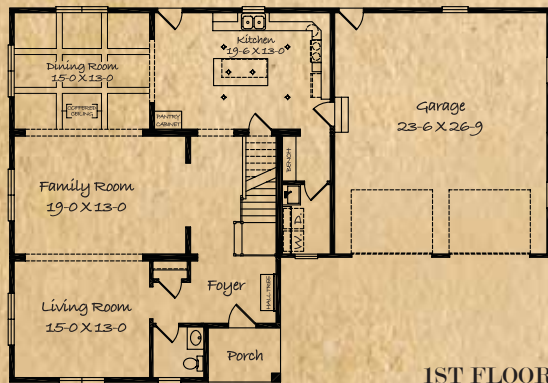


FOUR BEDROOMS, THREE & A HALF BATHS - A
CAPE COD THAT'S AT HOME ANYWHERE IN THE NATION



The BRANDON

SIMPLEX CRAFTSMAN SERIES



41'-5" X 60'-0"
3207 SQ. FT.

THE BRANDON A CAPE COD THAT
INVOKES IMAGES OF A LEISURELY LIFESTYLE
WITH FRIENDS GATHERING ON THE PORCH AS
THE SUN SETS FOR THE DAY. A DREAM? NO,
A ***DREAM HOME***

This ***Simplex 35th Anniversary Craftsman Home*** updates a timeless design that's at home anywhere in the nation, The Brandon.

Riding today's renaissance wave of Craftsman design, this spacious home meets the needs of the most demanding customer.

Simplex is proud to celebrate our founding with this 35th Anniversary Edition Cape Cod. This home embraces classic elements that have made both Craftsman design as well as Cape Cod itself natural treasures.

We invite you to be imaginative with the floor plan options. And as with all Simplex designs, customization is limited only by the limits of the imagination.



www.simplexhomes.com
(800) 233-4233

Please see reverse side for an alternate floor plan option.

ALTERNATE FLOOR PLAN OPTIONS

THREE BEDROOMS, TWO & A HALF BATHS

The SHOREHAM

SIMPLEX CRAFTSMAN SERIES

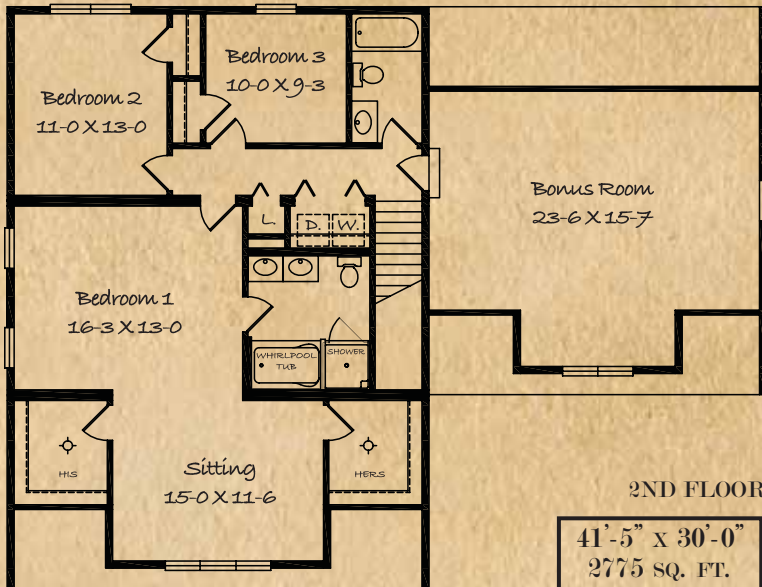
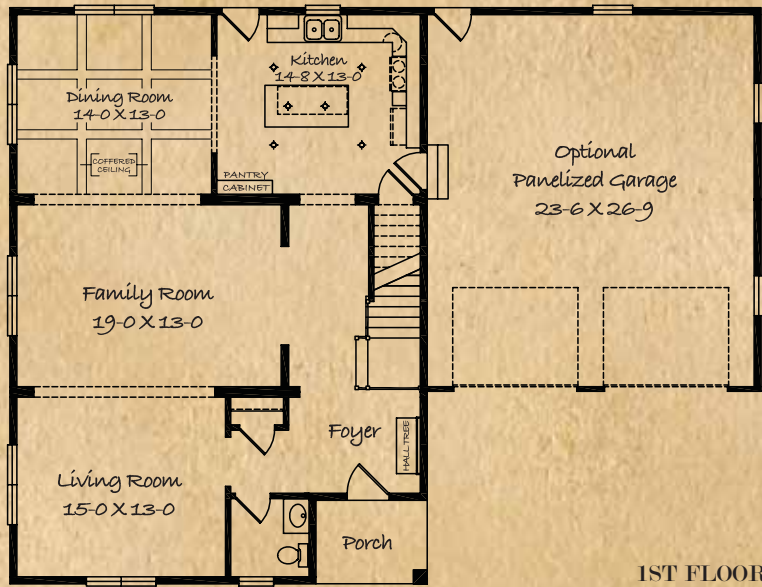
This beautiful Cape features Simplex Custom Select specifications for your region along with the following enhancements.

A recessed entry porch with a full-length Craftsman style column, maintenance free vinyl decking along with a vinyl-beaded soffit above. Cedar impressions shakes are included on the front dormers along with lineals around all windows, wide vinyl corner posts, prairie style grills in the top sash, and (12) decorative korbels to highlight this elevation.

Inside these homes feature Craftsman style moldings with 2 panel (Cambridge) doors. The old world charm of these homes is complimented by a built in "Hall Tree" in the entry foyer, and on the Brandon, a built in bench at the entry by the garage is included. A stair railing package that coordinates with this interior style is also included.

The dining room includes a coffered ceiling with cased openings to the family room, kitchen and living room.

The kitchen and master bedroom bath include Merillat Portrait® Oak cabinets with package "A" hardware. The master bedroom bath has ceramic tile flooring along with a "Darsey" whirlpool tub and shower combination.



41'-5" X 30'-0"
2775 SQ. FT.



"BUILDING HOMES WITH YOU IN MIND"