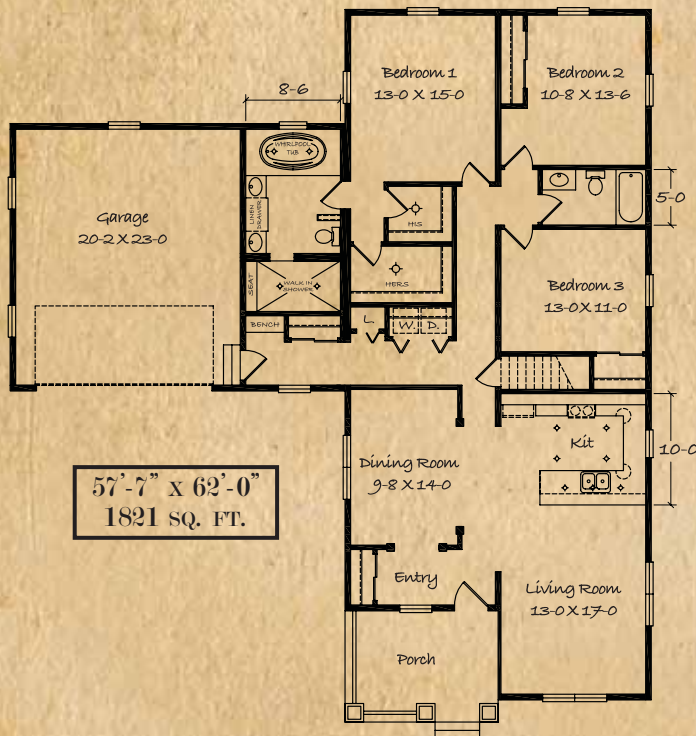


THREE BEDROOMS, TWO & A HALF BATHS - NOT A HOUSE, BUT A HOME



The BRUNSWICK

SIMPLEX CRAFTSMAN SERIES



THE BRUNSWICK

A TIMELESS RANCH. PERFECT AS A FIRST HOME, FOR GROWING YOUNG FAMILIES, OR AS A RETIREMENT HOME. AND BECAUSE IT'S FROM SIMPLEX, IT'S ALWAYS A DREAM HOME

This *Simplex 35th Anniversary Craftsman Home* takes advantage of the resurgence of classic craftsman design elements, updated to meet the needs of most homeowners.

Open floor plans take maximum advantage of the ample square footage while clean design lines augment this timeless classic.

Simplex is proud to combine the experience and expertise we have developed to produce this beautiful 35th Anniversary Edition Ranch. Of course there is a choice of floor plans and options - and with all Simplex homes, customization is limited only by the imagination.



www.simplexhomes.com

(800) 233-4233

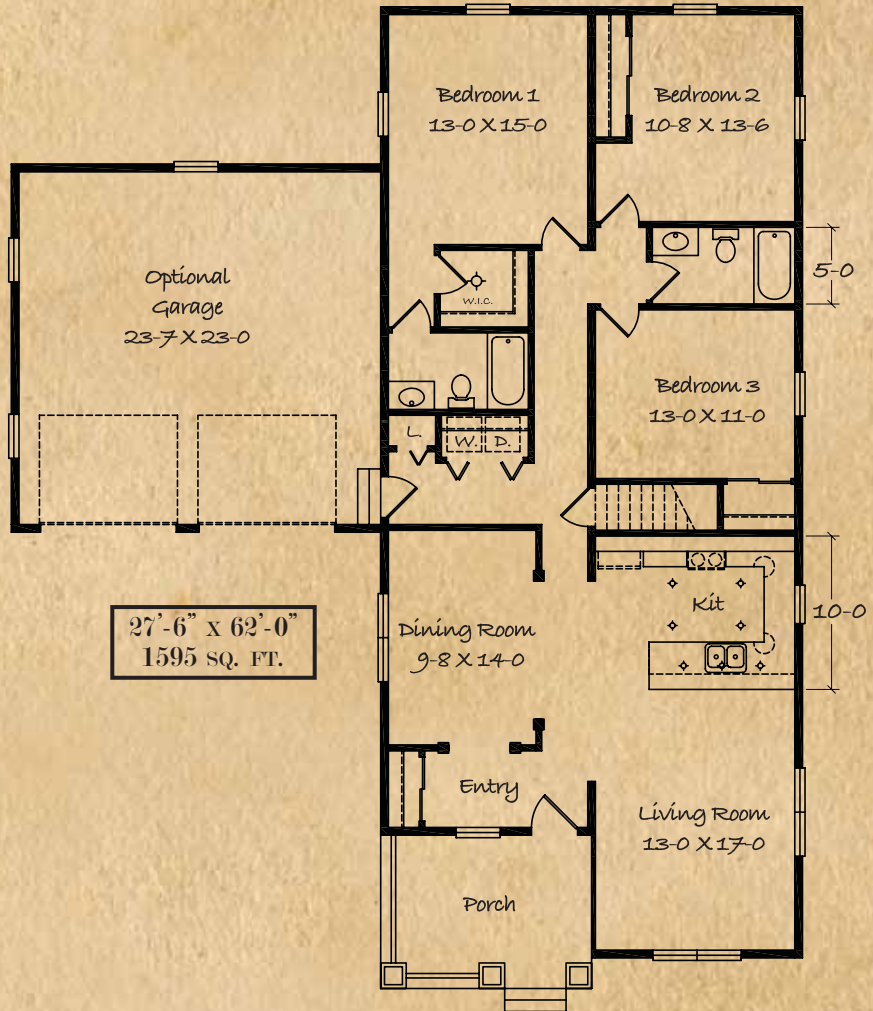
Please see reverse side for an alternate floor plan option.

The ANDOVER

SIMPLEX CRAFTSMAN SERIES

This home features Simplex Custom Select specifications for your region plus the following enhancements.

A family gathering front porch with Craftsman style columns (stonework not included) maintenance free vinyl decking along with a vinyl-beaded soffit above. A 7/12 roof pitch with cedar impression shakes is included on the front gable and garage dormer along with lineals around all windows, wide vinyl corner posts, prairie style window grills in the top sash and (12) decorative korbels to highlight this elevation. Inside these homes feature Craftsman style moldings with 2 panel (Cambridge) doors. The kitchen and master bedroom bath include Portrait Oak cider cabinets with package "A" hardware to compliment the dining room area which has (4) built in columns. The kitchen and master bedroom bath include a ceramic tile floor. The Brunswick master bedroom suite includes a ceramic tile walk-in shower with a 3-function Moen Kingsley® body spa. The whirlpool tub accompanies a Corian platform and Merillat® Portrait Oak decorative front.



"BUILDING HOMES WITH YOU IN MIND"