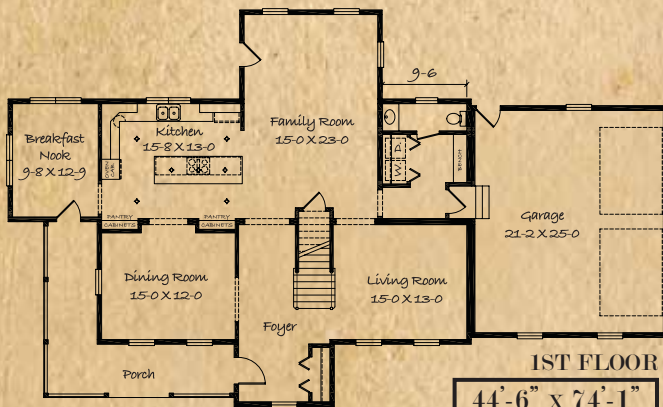


TWO STORIES OF CLASSIC AMERICAN DESIGN - FEATURING  
FOUR BEDROOMS, TWO & A HALF BATHS



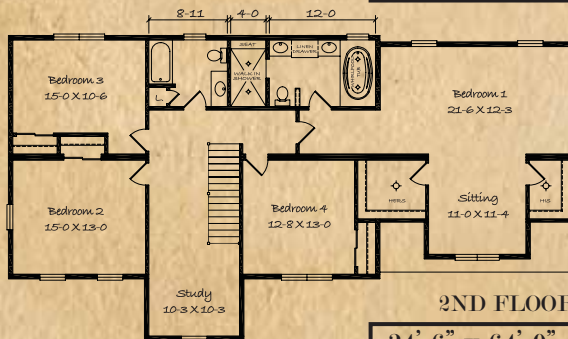
# The CASTLEBURY

## SIMPLEX CRAFTSMAN SERIES



1ST FLOOR

44'-6" X 74'-1"  
4013 SQ. FT.



2ND FLOOR

34'-6" X 64'-0"

### THE CASTLEBURY

FROM YOUR FRONT PORCH WICKER ROCKER YOU CAN ALMOST SMELL THE APPLE PIE COOLING IN THE KITCHEN. **THE CASTLEBURY** IS PERFECT FOR GROWING YOUNG FAMILIES, OR GIVING THE GRANDCHILDREN LOTS OF ROOM WHEN THEY COME FOR A VISIT. TRULY A DREAM HOME!

This *Simplex 35th Anniversary Craftsman Home* taps into the demand for Craftsman design in a big package!

Two full stories of countless little touches that make this home an instant classic.

We invite you to review our floor plan options - or to come up with your own. The American Dream can't be denied and neither will your need to make design changes that will make you feel you are living the Rockwell lifestyle.



www.simplexhomes.com  
(800) 233-4233

Please see reverse side for an alternate floor plan option.

# The WINDHAM

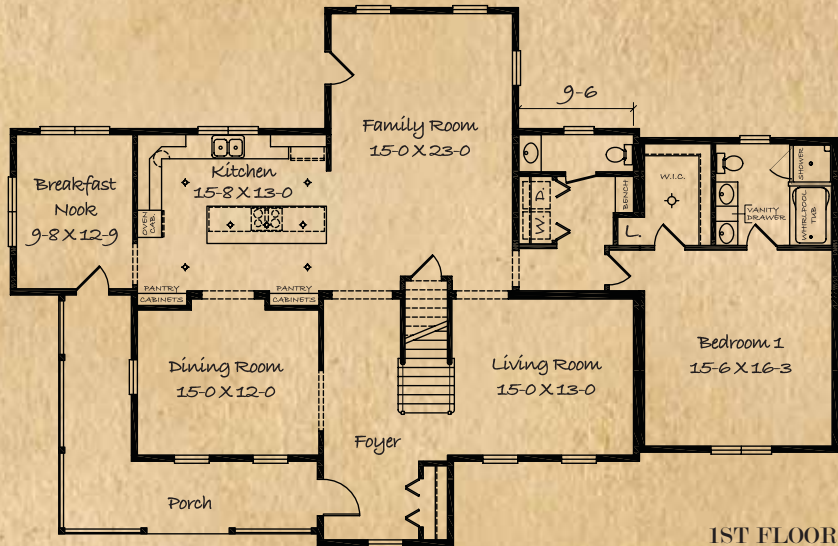
## SIMPLEX CRAFTSMAN SERIES

This beautiful home features Simplex Custom Select specifications for your region along with the following enhancements. A 9/12 roof pitch and dormers are complimented by cedar impression shakes on the exterior front tower bump out and dormer along with lineals around all windows, wide vinyl corner posts, prairie style window grills in the top sash and (12) decorative korbels to highlight this elevation. Inside these homes feature Craftsman style moldings with 2 panel (Cambridge) doors along with a coordinating stair railing package.

The kitchen and master bedroom bath include Merillat® Portrait Oak cabinets with package "A" hardware.

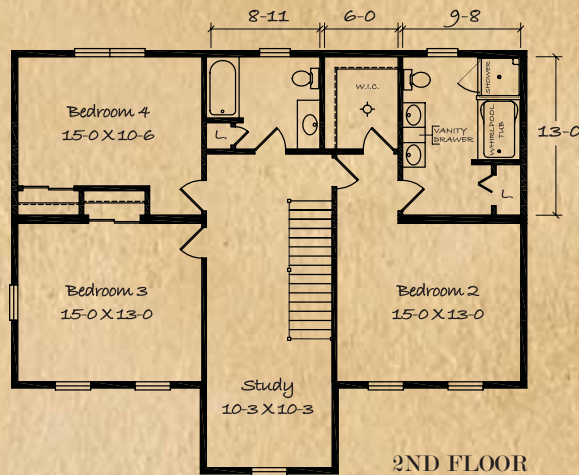
The master bedroom bath has ceramic tile flooring along with (2) Darsey whirlpool tub/shower combinations in the Windham model. The Castlebury master bedroom bath includes a walk-in tiled shower along with a Moen Kingsley® 3 function body spa. The whirlpool tub is accompanied by a Corian platform and a Merillat® decorative front.

The Castlebury home also includes a finished garage.



1ST FLOOR

44'-6" X 68'-5"  
3114 SQ. FT.



2ND FLOOR

34'-6" X 42'-0"



"BUILDING HOMES WITH YOU IN MIND"